

A photograph of a forest path with two people walking away from the camera. The path is surrounded by tall, thin trees with green foliage. The scene is bright and sunny. A dark green semi-circular overlay is positioned in the upper right corner, containing the title and subtitle text.

Oxley Creek Social Values Survey 2024 Results

Brisbane Sustainability Agency Pty Ltd



BRISBANE
Sustainability
AGENCY



Oxley Creek Social Values Survey Results

Background & purpose

When people value a place, they are more likely to care for and protect it. Therefore, understanding how communities perceive and value their local waterways gives an insight into how likely people are to use and look after them. The way that communities value waterways is directly related to the perception of waterway cleanliness and health as well as the ability to use and safely access the waterway corridor for walking, cycling, picnicking and water-based recreation.

The purpose of the social values survey is to gain an understanding of the value that the local community (residents and workers) and visitors place on the waterways and surrounding green open spaces within the Oxley Creek corridor.

Annual surveys have been undertaken since 2021 to assist in measuring and tracking the changes in how people use and value the Oxley Creek corridor over time. Where significant differences between results across the years were identified, they have been highlighted within this summary.

The target audience for the 2024 survey were members of the local community, both residents and businesses, as well as regional visitors. The survey was open to the public for responses from 13 September 2024 to 22 November 2024.

Over 2024, the Oxley Creek Transformation project made significant progress. Both the Glider Forest Shared Trails in Larapinta and the Archerfield Wetlands District Park were opened to the public. The Oxley Creek Transformation project team also delivered 18 engagement activities, including public bird watching walks and community planting events focussed on revegetation of key locations within the creek corridor.

Promotion of survey

Method	Result
Electronic Direct Mail to Oxley Creek Transformation Social Survey respondents from the previous year, 2023 (371 subscribers)	289 unique opens 72 clicks
Feature in three of the Brisbane Sustainability Agency's Live for Less Newsletter (residential audience of 31k)	209 clicks across the 3 newsletters
Promotional signs (located at Graceville Riverside Parklands, Oxley Creek Common, Archerfield Wetlands Discovery Trail, Archerfield Wetlands District Park, Warril Parkland, Cliveden Pocket, Norma Crocker Park, Paradise Lakes)	165 responses
In-person events (Plantapalooza - 5 October 2024, WasteSMART Awards - 24 November 2024)	11 responses
Promotion through Oxley Creek Catchment Association	Reach unknown – shared via Facebook advertising and in newsletter
Promotion through local ward office (Moorooka)	Reach unknown

Respondent Profile

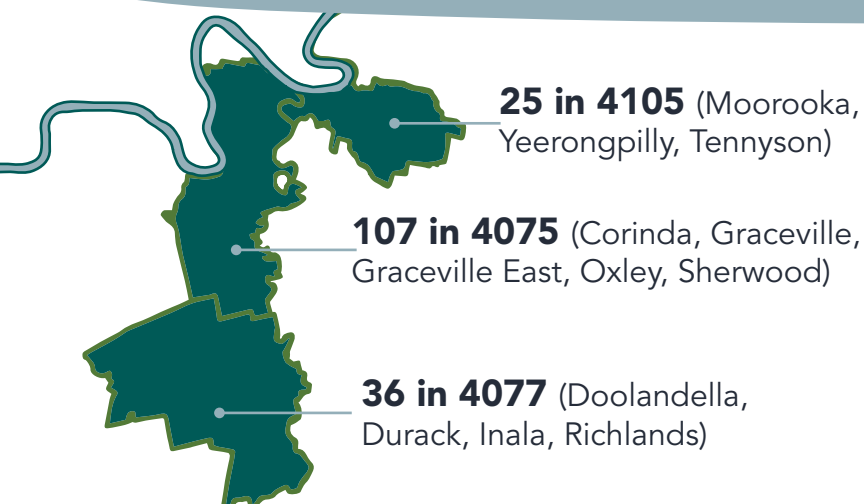
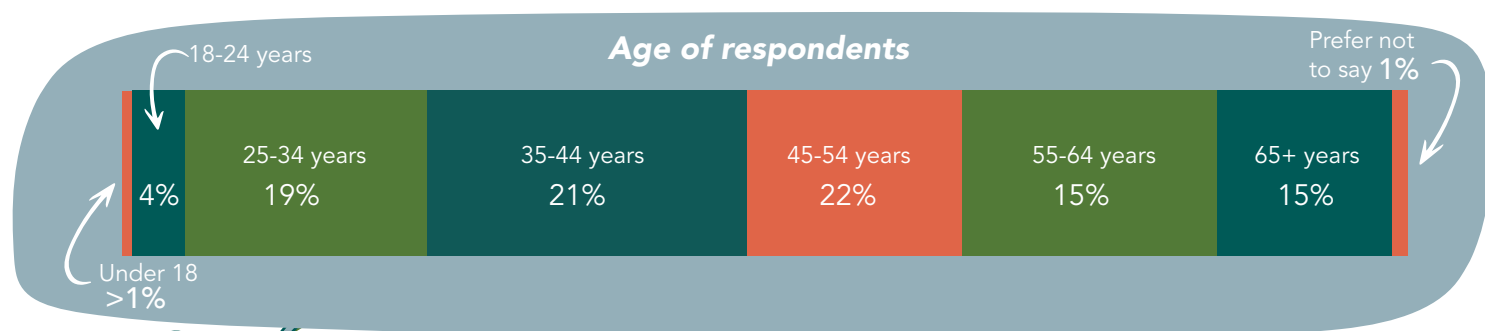
560 individual responses

577 in 2023, 615 in 2022 and 438 in 2021

63%

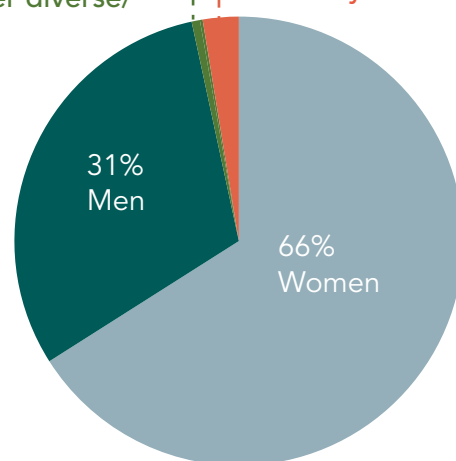
of respondents had heard of the Oxley Creek Transformation project and/or its priority projects

73% in 2023, 86% in 2022 and 69% in 2021



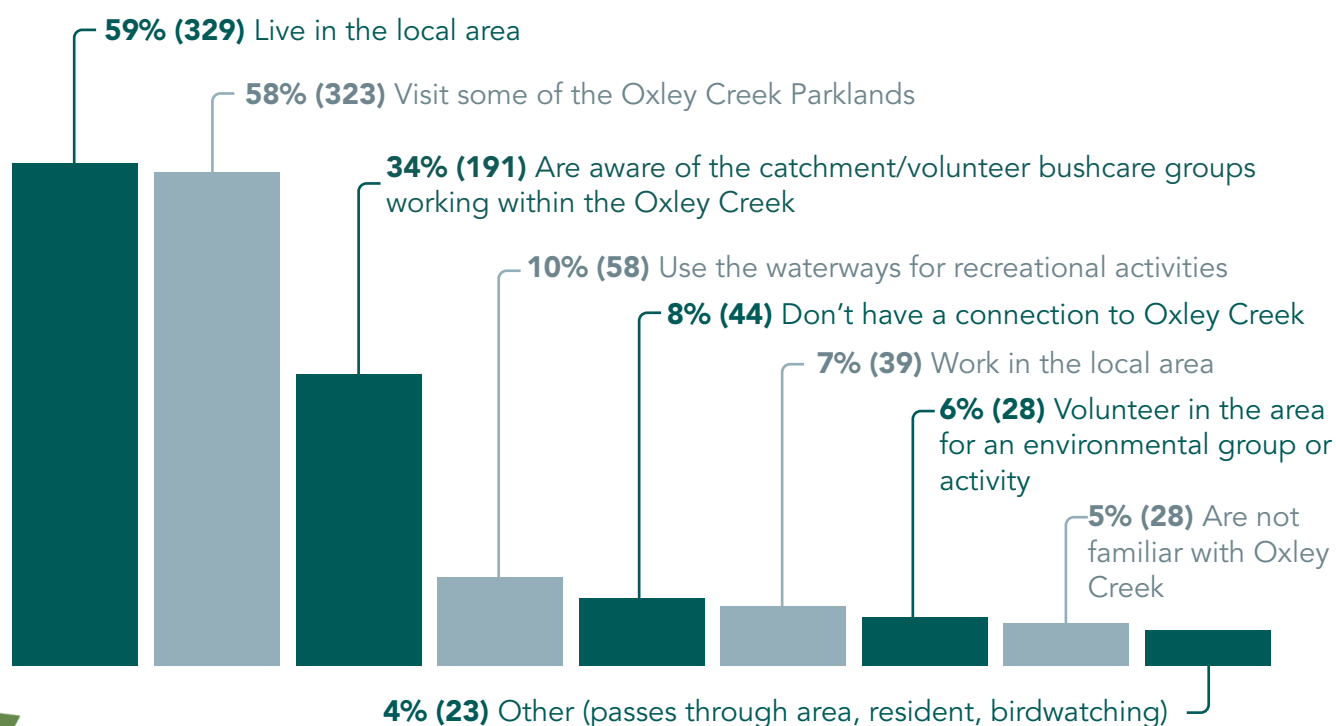
1% Non-binary/
gender diverse/
other

3% Prefer not
to say



Most common respondent postcodes

Connection to the area



2024 results



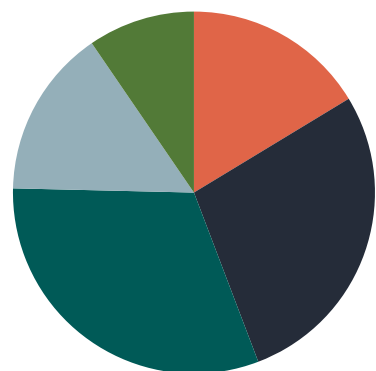
BRISBANE
Sustainability
AGENCY

Visiting Oxley Creek

The following responses are from respondents who had visited Oxley Creek in the past 12 months

Frequency of visits

71% of the respondents had visited Oxley Creek in the past 12 months, of which:



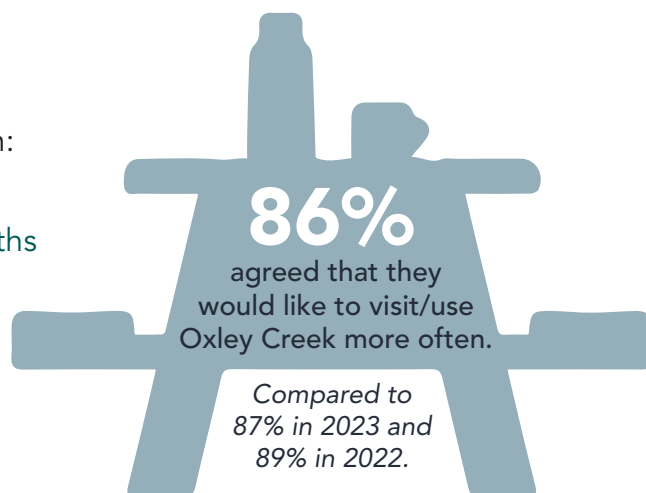
31% visited every three months

28% visited at least monthly

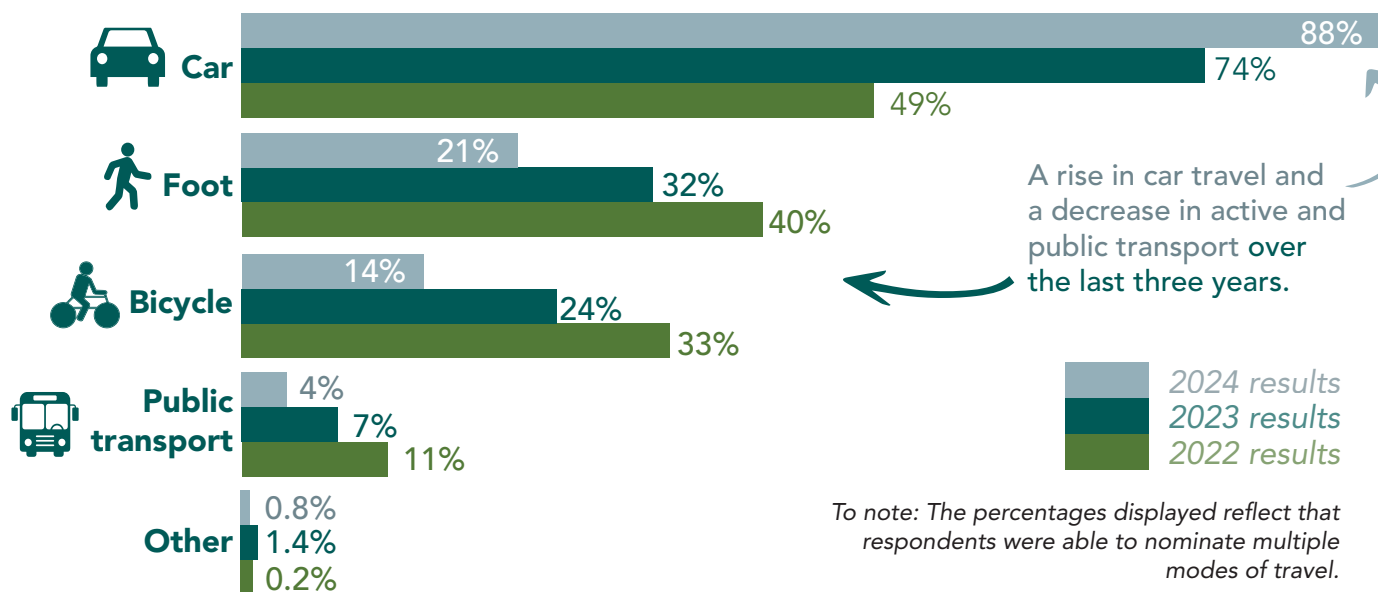
16% at least weekly

15% visited every six months

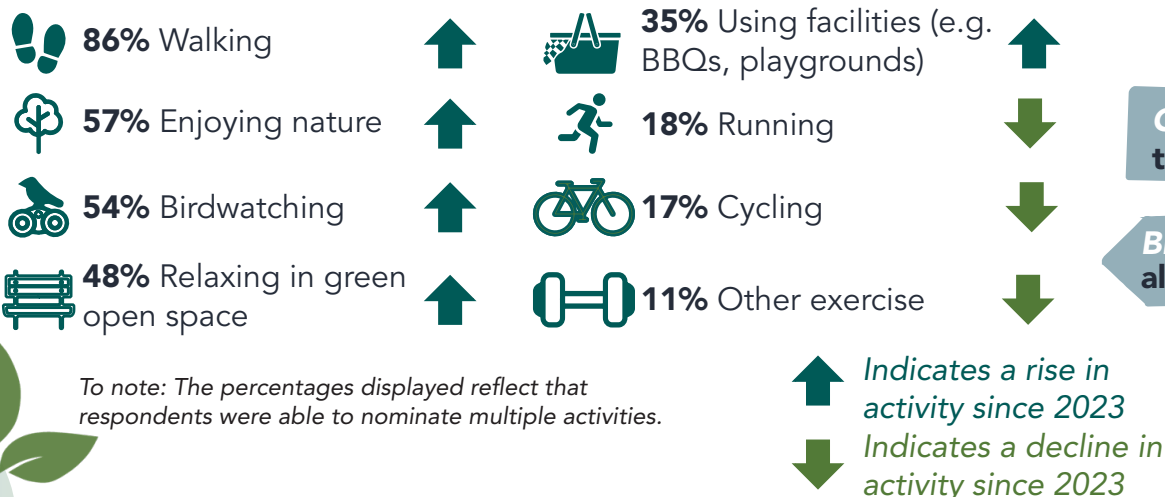
10% visited once a year



How people travel to Oxley Creek

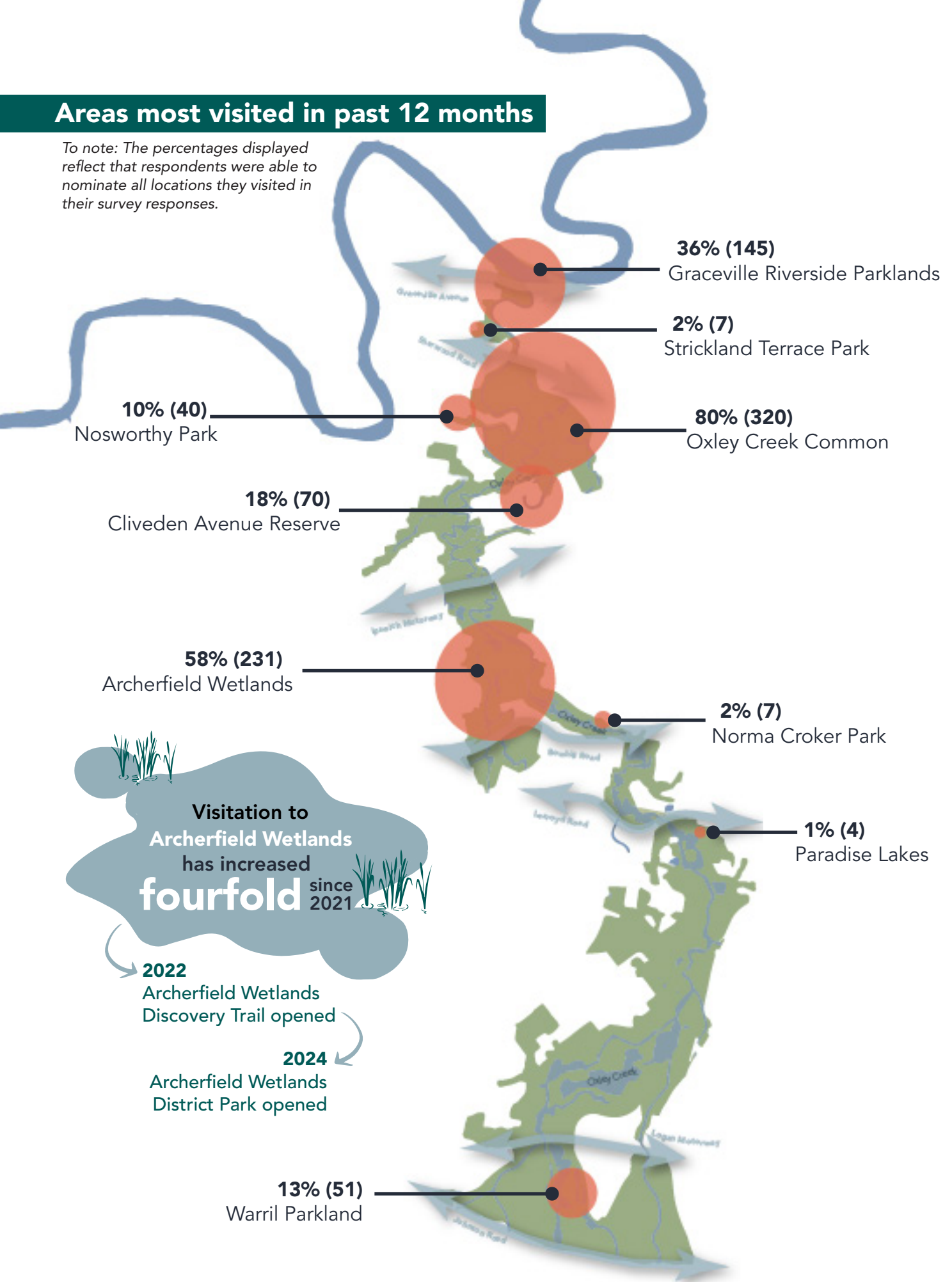


Most common activities undertaken



Areas most visited in past 12 months

To note: The percentages displayed reflect that respondents were able to nominate all locations they visited in their survey responses.



Visitation to
Archerfield Wetlands
has increased
fourfold since 2021

2022

Archerfield Wetlands
Discovery Trail opened

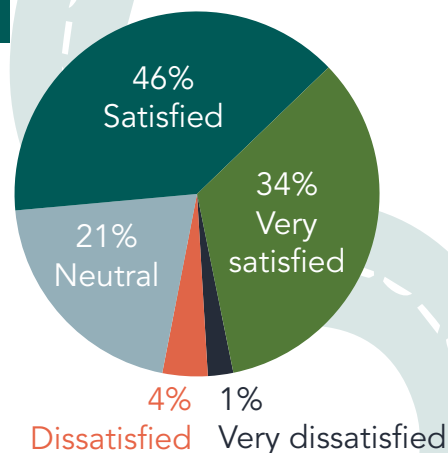
2024

Archerfield Wetlands
District Park opened

Satisfaction with ability to access Oxley Creek

73% of respondents who had visited Oxley Creek in the last 12 months were either satisfied or very satisfied with their ability to access the Oxley Creek parkland corridor.

Compared to 74% in 2023.



21 comments car parking

- Car parking is limited at Archerfield Wetlands on weekends, particularly at the northern end.
- Parking at Oxley Creek Common is inadequate when it is popular.
- Improve parking at Strickland Terrace.
- Additional parking could disrupt the natural area's feeling.

17 comments connectivity

- Increase connectivity between key green spaces and local schools.
- Bike route connections with the greenway are highly anticipated and cycle access from the city would encourage more visitors.
- Increase information and signage on how places connect.

13 comments walking paths

- Plant tree corridors and install shade structures along exposed routes, especially at Warril Parklands and Archerfield Wetlands.
- Install paths and trails to and around Paradise Lakes and additional ones at Oxley Creek Common.

9 comments Sherwood Road

- Improve pedestrian and cyclist safety, especially near the bridge and railway.

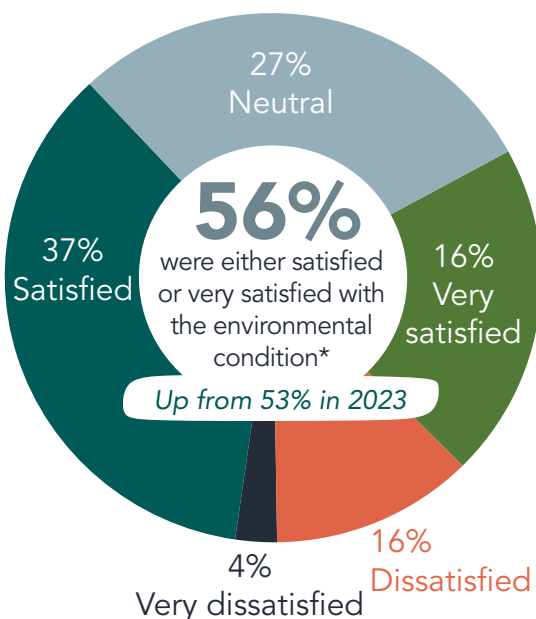
- Reduce traffic hazards by adding a dedicated turning lane into Oxley Creek Common.

16 comments cycle access

- Provide separated bike lanes so cyclists aren't sharing narrow pedestrian footpaths.

- Extend all bikeways and address cyclist safety to and from Oxley Creek Common and Archerfield Wetlands.

Satisfaction with overall environmental condition of Oxley Creek



*Who had visited Oxley Creek in the past 12 months at the time of survey.

30 comments Rubbish and illegal dumping

- Install more bins and increase collection frequency at popular spots.
- Use nets at upstream stormwater outlets to catch rubbish.
- Improve enforcement against illegal dumping, especially in the highly industrial areas.

15 comments Invasive weeds and exotic grasses

- Provide additional resources and support for local groups to control invasive plants.
- Increase removal of water hyacinth.
- Improve mowing maintenance in riparian zones.

Water quality 27 comments

- Educate surrounding businesses and properties about responsible waste and runoff management.
- Use polluted sites for natural filtration systems and research.
- Increase monitoring and public information about using the creek recreationally.

Appreciation for restoration 13 comments

- Praise for the ongoing improvements; rewilding, parklands and post-flood cleanups.
- Recognition of the volunteers' hard work in nature conservation.

Most-valued aspects of Oxley Creek

Of the respondents who had visited Oxley Creek in the last 12 months, 291 individual responses were provided to the question “**what do you value most about Oxley Creek?**” The most common themes included:

● Values identified in previous surveys

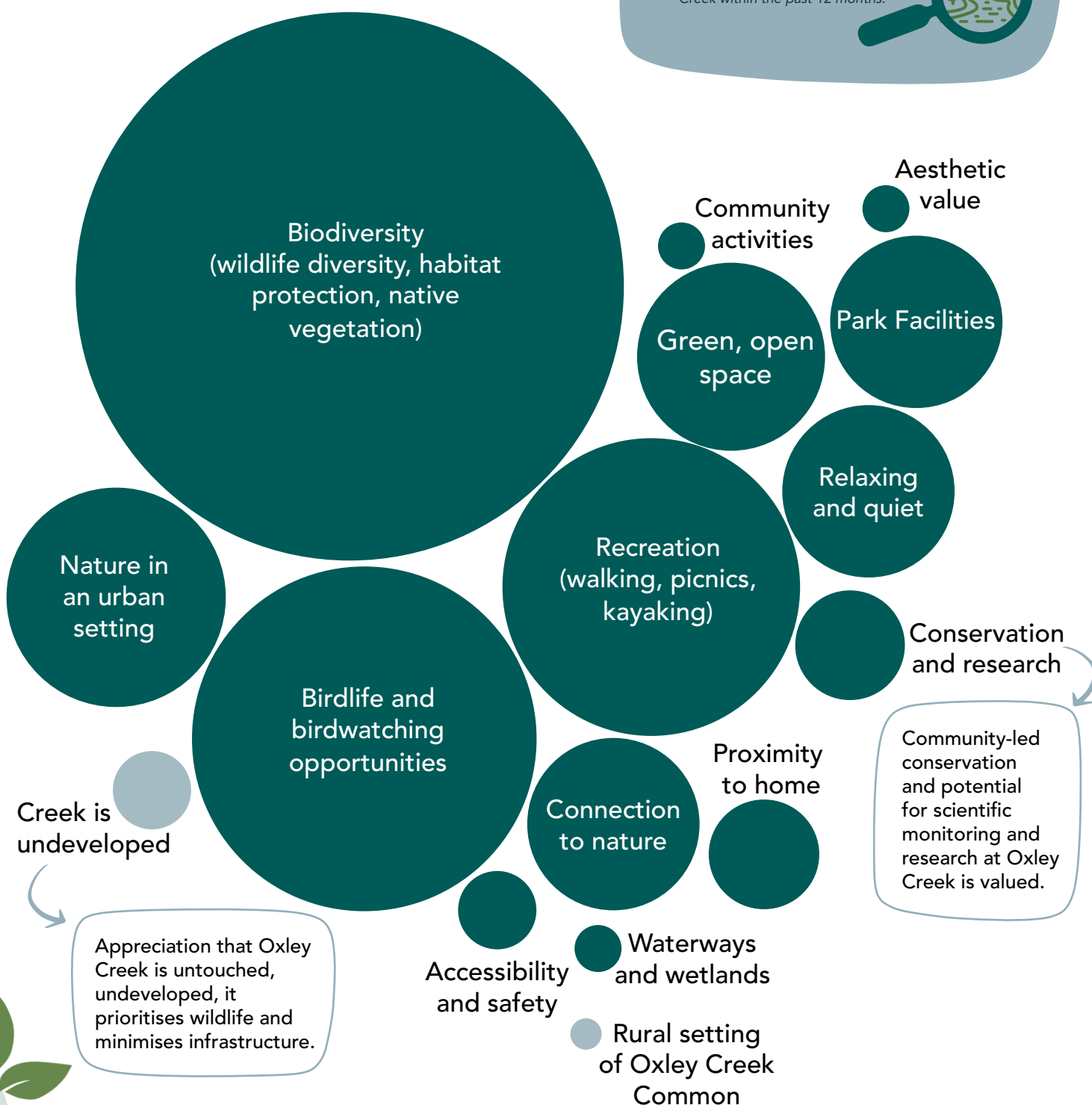
● Additional values identified in 2024

Note: Size of bubble reflects the popularity of valued themes amongst the survey responses.

In both 2023 and 2024,

87% agreed that the Oxley Creek corridor has **interesting features** with **lots to explore and discover.***

*Respondents who had visited Oxley Creek within the past 12 months.



"What do you value most about Oxley Creek?"

It's an incredible resource with an amazing history.

That it offers a green space corridor close to where I live. That it reminds us of nature and its importance while being in suburbia. I like to listen to the birds on my morning walks and I like seeing all the people being out and about with their kids and dogs.

That it has been regenerated and open to the public to enjoy.

The Archerfield Wetlands redevelopment with the fantastic playground and green spaces for my kids to play and picnic as a family.

It is a tranquil oasis providing unique access to flora and fauna that you don't ordinarily see.

Opportunities for riding and walking with the kids that are safe, convenient to us and close to nature.

Having a world class walking/cycling trail and enjoyable natural environment at my back door. Well done Brisbane!

The wide, open spaces at Oxley Creek Common - great for kids to run or ride bikes, while seeing native wildlife and the farming animals side by side.

Connection to nature! It is not a suburb I travel to often, however when I do, I feel like I am getting away from daily life.

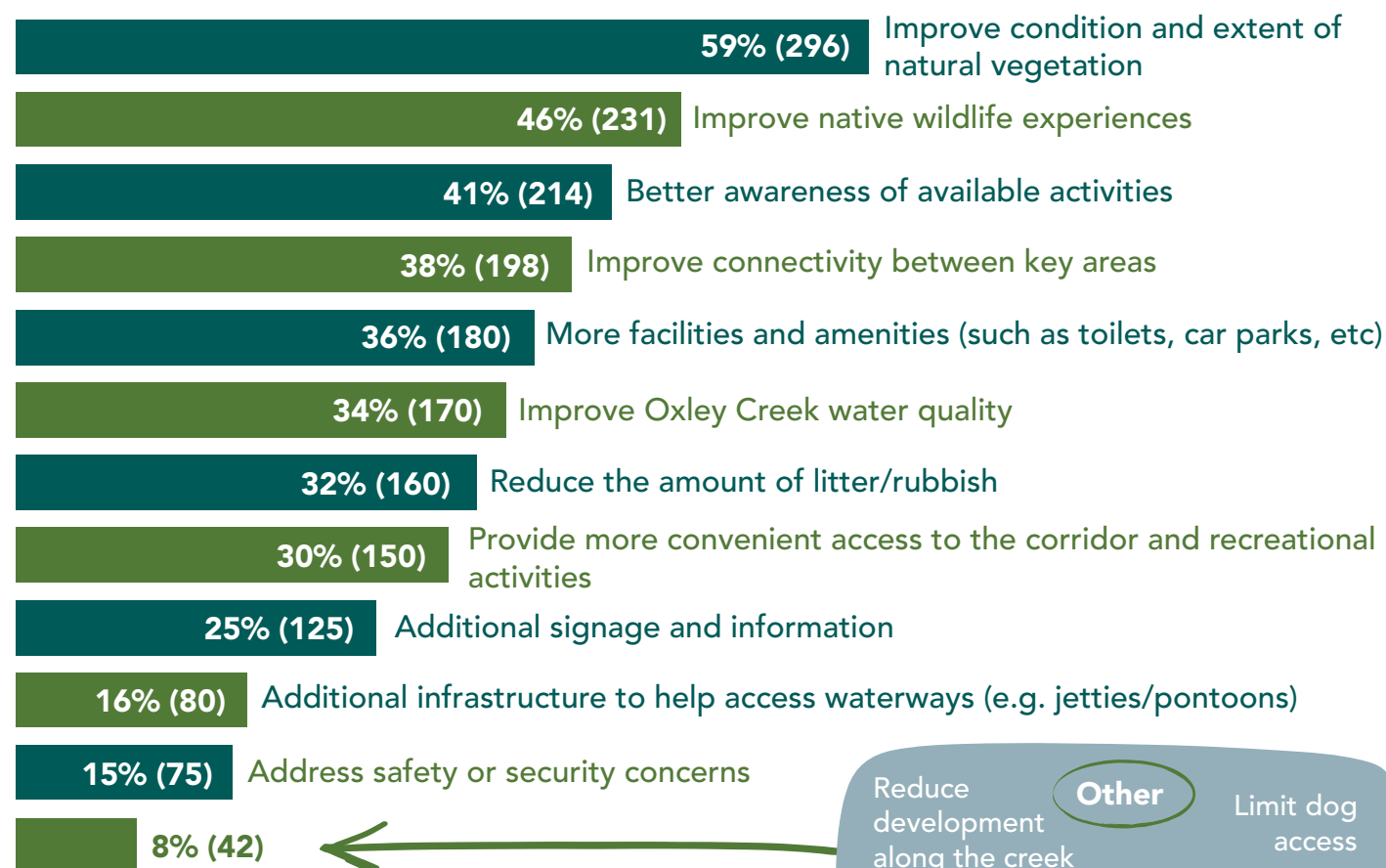
Ability to exercise without traffic.

Relatively untouched natural space with an abundance of bird life. This is an important area in the region for birdwatching and I often bring friends from out of town, who inevitably love the area.

The opportunity to make it a great waterway and green spine, connected to activity hubs.

Areas of high walkability and high biodiversity of flora and fauna.

Ways of improving & increasing usage of Oxley Creek

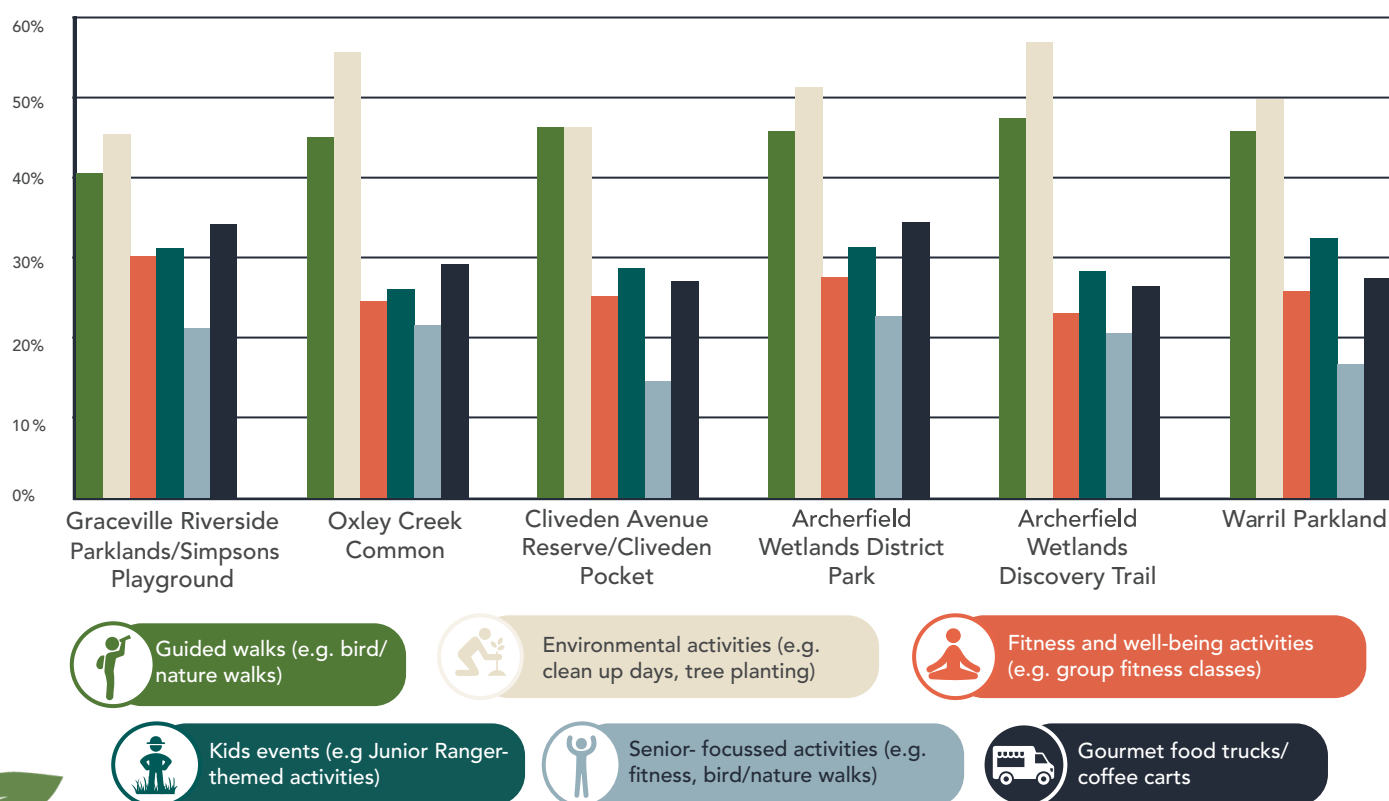


To note: The percentages displayed reflect that respondents were able to nominate multiple improvement ideas.

Other

- Reduce development along the creek
- Limit dog access
- Tennis courts
- Supply more drink taps
- More kid's activities

Preferred activities and locations along Oxley Creek



To note: The percentages displayed reflect that respondents were able to select multiple activities.

187 individual responses were provided to the question **“Do you have any other general comments relating to Oxley Creek?”** (how your use and experience could be improved and areas you would like to be able to visit but are currently unable to). The most common themes provided within the responses were:

Facilities and recreational opportunities

49

comments



- Provide infrastructure for recreational opportunities (scooter area, park equipment for teenagers).
- Facilitate more kids activities at parklands (gardening/rehabilitation activities, toddler friendly activities).
- Improve toilets at Oxley Creek Common.
- Increase shade, parking and seating at popular areas.
- Provide new playgrounds at Graceville Riverside Parklands and Paradise Lakes.

Connectivity and pathways

46

comments



- Enthusiasm for the Greenway project.
- Support for safe connectivity along the corridor.
- Green bridges between key areas.
- Walking paths and trails along the creek.

Avoid over-development of the creek

22

comments



- Interest to retain natural, undeveloped character.
- Wildlife and ecological health.

Appreciation for biodiversity

48

comments



- Importance of native riparian vegetation.
- Manage invasive weeds and grasses.
- Emphasis on restoring and protecting habitat for wildlife and birdlife.
- Fire ant management.
- Appreciation for the environmental values of Oxley Creek.

Appreciation for the Oxley Creek Transformation project

21

comments

- Redevelopment of Archerfield Wetlands.
- Balance between recreation, environmental restoration and community access.

Other

12

comments

- Anticipation to visit.
- Increase viewing opportunities of the creek.
- Sandflies deter visitors.

Increase signage and creek promotion

13

comments



Pollution and water quality

11

comments

