

mojo

Mojo Power Energy Saving Tips

Saving energy can be as simple as turning off a switch rather than leaving an appliance on stand-by. The less energy you use, the less you have to pay for. You'll also be helping the environment by reducing the greenhouse gas emissions associated with energy use.



Mojo Power Energy Saving Tips

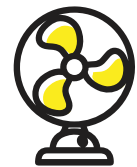
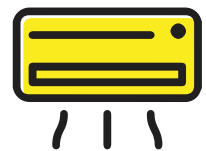
The following practical tips can help you save on your energy bill.

Any time

Turn off appliances at the powerpoint when you are not using them. Use less hot water and have shorter showers. Upgrade your home insulation, windows, and blinds to heat-proof your house. Take advantage of the sun and rely on natural light as much as you can each day, rather than automatically turning on the lights. Check the star rating when buying appliances to compare energy efficiency. More stars mean fewer running costs.

Heating and Cooling

Keep temps between 18–20°C in winter and 24-25°C in summer. Only heat and cool the rooms that you are using and close doors and windows in those areas. Reverse-cycle conditioners (ACs) are cheaper to run in winter than standard electric heaters. Install the right sized ACs for the space you need to cool or heat. Regularly maintained ACs operate more efficiently (e.g. cleaning air filters and coils). In bedrooms, consider using hot water bottles, electric blankets & dress warm. The most effective way to keep your home cool during the day is to prevent the sun's rays from hitting windows and walls. Blinds, curtains and reflective window tints all help. At night, place a fan near an open window - it will blow hot air out of the room, replacing it with cold air from outside. Open another window else where to encourage a cross breeze.



In the Bathroom and Laundry

Consider using warm or cold water settings rather than hot. Drying clothes costs nothing if you use the sun. If using your clothes dryer, leave about a quarter of your dryer's barrel empty so heat can circulate more freely to help your clothes dry faster. Dry washing in quick, consecutive loads to benefit from the warmth from the previous load. Add a small dry towel to your load to reduce drying time by up to 25%. Clean your dryer's lint filter after each load. A clotheshorse can be used in a spare room or near a heater. Encourage household members to take shorter showers. Always wash full loads in washing machines and try to use the fastest cycle.



Hot Water

Switch to a water efficient shower head and make shorter showers a habit. Reduce the temperate setting of your hot water system to 60°C (instead of 70 - 80°C) and if you have an instantaneous system, check that your thermostat is set no higher than 50°C. Make regular checks to ensure there are no leaks in your hot water system and fix any leaking taps quickly. Insulate hot water tanks and pipes to limit heat loss. If your hot water system is 10 or more years old you may want to consider a more efficient replacement like a hot water heat pump. Ensure that you get the right system for the number of people in your home and position it near where you use hot water the most.



In the Kitchen

When cooking, do not overfill pots with water. Use the minimum quantity of water needed and keep the lid on. Depending on use, cooking equipment should be serviced twice a year to ensure it is always working at peak efficiency. Also, regularly checking seals and hinges will alert you if equipment needs repair to ensure maximum efficiency. Keep dishwasher and dryer filters clean. Smaller appliances like kettles, coffee machines, crockpots and toasters are more efficient than using the stove. Keep the fridge out of direct sunlight and away from heat sources and a leave a gap around it to let the air circulate. Keep doors closed and try to limit the number of times you open the fridge door. Fridge/freezer - check the temperature settings are not too low. Fridges should be between 3 -5°C and freezers between minus 15 - 8°C. Make sure you're not making your appliances work harder than they need to. For example, defrost food in the fridge overnight rather than in the microwave. Use a microwave when possible to cook food. When simmering on a stove top, put pot lids on and use appropriately-sized pots with flat bottoms and tight fitting lids. Make sure oven doors close tightly and seals are in good condition.



In living areas

Switch off TVs and home entertainment systems at the wall. Turn off lights when you leave a room

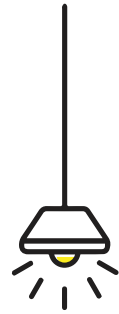
Lighting

Switch to energy efficient lighting like compact fluorescent or LED bulbs as an alternative to incandescent or halogen lighting. Turn lights off in areas of your home that are not being used. Use light coloured paint on interior walls, ceilings and other surfaces in your home. Locate windows and skylights to allow natural light inside.

Buy lumens, not watts

Lumens let you buy the amount of light you want. So when buying your new bulbs, think lumens, not watts. The brightness, or lumen levels, of the lights in your home may vary widely, so here's a rule of thumb:

- To replace a 100 watt (W) incandescent bulb, look for a bulb that gives you about 1600 lumens. If you want something dimmer, go for less lumens; if you prefer brighter light, look for more lumens
- Replace a 75W bulb with bulb that gives 1100 lumens
- Replace a 60W bulb with bulb that gives 800 lumens
- Replace a 40W bulb with bulb that gives 450 lumens





Here are some tips to help you conserve energy and save money in the beautiful Aussie summer or winter.

Summer energy saving tips

Cooling your home

Fans should be the first choice for cooling. For efficient air conditioning, the house or room should be sealed and highly insulated with bulk and reflective insulation. Windows must also be shaded from the summer sun. Zone your home by cooling one part of your house and cut down on cooling in other areas. Close up your house during the heat of the day and open it up at night to cool it down naturally.

Outside the home

Consider planting trees or bushes outside to increase shading and reduce the direct sunlight entering your home. Install motion sensors on security lights and solar lights for garden pathways. Pool owners should reduce daily pumping time – it's enough to filter the entire water volume once per day. Consider whether you need power tools and electric mowers, blowers and trimmers– manual versions are available and save you money, whilst giving you a good workout. Use the BBQ. It will save you money and it's the Aussie way!

Be bushfire ready!

Keep in mind that the peak fire season varies depending on where you live in Australia. Check with the Bureau of Meteorology to find out when the fire risk is highest in your area.

Install fine metal mesh screens on windows and doors. Fit seals around doors and windows to eliminate gaps. Enclose the areas under the house. Keep lawns short and gardens well maintained. Cut back trees and shrubs overhanging buildings. Clean up fallen leaves, twigs and debris around the property.

Winter energy saving tips

Heating your home

Insulate the roof, walls and floor, seal off draughts. Let in winter sun and draw curtains at night. Dress for the temperature by putting on a jumper and warm socks. Zone your home and only heat the rooms you are using. Use doors to prevent heat escaping into unused rooms.

Draught-proofing

Reduce the costs of winter heating and summer cooling by making sure your house is well insulated and draught proofed.

Fit draught stoppers and weather sealing tape to external doors and doors to high ventilation areas. Fit weather sealing tape to windows. Avoid vented, recessed downlights, which can increase air leakage. Seal any cracks or gaps in floors, walls, and ceiling with a filler. Install exhaust fans. Use a chimney damper when the fireplace is not in use.

Did you know? Everyday, Australians use enough electricity to power eight billion TVs or to charge over 110 billion mobile phones. That's about ten million households and businesses chewing through over half a million mega-watt hours of electricity every single day. We also use enough natural gas to boil water for 36 billion cups of tea.

*TVs calculated based on average consumption of 40-inch screen LED TVs 10 h/day test standard from energyrating.gov.au. Light bulbs calculated based on use of 60 W bulbs. Mobile phones calculated based on Electric Power Research Institute report.



Mojo Power Pty Ltd ABN 61 604 646 479
Level 5, 28 Margaret Street, Sydney NSW 2000
GPO 7049, Sydney, NSW 2001
hello@mojopower.com Fax 02 8318 2118